

UC San Diego

Health Sciences

DIVISION EDUCATION INITIATIVES

Roopali Gupta, MD & Jennifer Reichstadt, MSG

UC SAN DIEGO GERIATRICS EDUCATION

FELLOWSHIP

FACULTY/STAFF DEVELOPMENT

Division CME Grand Rounds

Geri Education Portal

Access to GRS Teaching Slides

COMMUNITY EDUCATION

GWEP

Dementia Care Aware

RESIDENTS

UCSD Internal Medicine
(4-week rotation)

Family Health Centers of San
Diego Family Medicine

Scripps Internal Medicine

UCSD Family Medicine
(occasional)

Camp Pendleton Family Medicine

MEDICAL STUDENTS

MED 279

MED 410

MED 452

Geriatrics Interest Group

OTHER INTERPROFESSIONAL LEARNERS

Pharmacy Residents

NP Students

IT TAKES A VILLAGE...

UC San Diego

Alison Moore, MD, MPH, Division Chief

Roopali Gupta, MD, Education Chief, Program Director

Parag Agnihotri, MD, Chief Medical Officer, Population Health Services

Khai Nguyen, MD, MHS, Clinical Services Chief

Tessa Antalan, MD, Senior Medicine Clinic

Veronica Gonzalez, MD, Senior Medicine Clinic & VA Home-Based Primary Care

Benjamin Han, MD, MPH, Journal Club Director

Maile Karris, MD, Owen Clinic

Ian Neel, MD, Senior Behavioral Health

Anjoulie Pujji, MD, Wellness Curriculum Director

James Templeman, MD, Geriatrics Trauma Consult Service

Aireen Gutierrez, MD, Momo Kurosaka, MD, Janet Davis, NP, Lindsay Hanna, MSN, NP-C, and Alberta Agyemang, MSN, FNP-C, Population Health Services

David Flores, RN and Jennifer Clay, BSN, RN, BA, SECU

Steve Huege, MD, Program Director, Geriatric Psychiatry Fellowship

VA San Diego Health Care System

Colin Thomas, MD, MPH, Chief of Medicine

EB Sladek, MD, Section Chief and Medical Director of the Community Living Center

Sarah Bailey, DO, Mission Valley Primary Care Clinic

Arnold Gass, MD, Clinical Professor Emeritus

Ramin Motarjemi, MD, Community Living Center

Gilbert Naco, MD, VA, Palliative Care

Richard Nguyen, MD, Home-Based Primary Care



OUR CLINICAL TRAINING SITES



UC San Diego

- Senior Behavioral Health (Hillcrest)
- Trauma Geriatric Medicine Consult Service (Hillcrest)
- Palliative Care (La Jolla)
- Continuity Clinic (La Jolla)
- Electives (Both)
- Geriatrics ED (Both)
- Population Health (Varies)
- Owen Clinic (specialty clinic for HIV care- Hillcrest)

VA San Diego Healthcare System

- Community Living Center (La Jolla)
- Home-based Primary Care (Varies)
- Continuity Clinic (Mission Valley)
- Palliative Care (La Jolla)

Elizabeth Hospice



The Elizabeth Hospice

Silverado Senior Living

Memory Care Community

Gary and Mary West PACE



FAMILY HEALTH CENTERS
OF SAN DIEGO



SAN YSIDRO
HEALTH

PACE (Program of All-Inclusive Care for the Elderly) Sites

GERIATRIC MEDICINE FELLOWSHIP (EST. 1988)

FELLOW DIDACTIC CURRICULA

Core Lectures

Patient Safety Case Conference

Board Review

Journal Club

Simulation Training

Leadership and Clinical Educator Trainings

Wellness Curriculum

QI Curriculum

MDCC

Boot Camp

PROGRAM LEADERSHIP

Program Director:
Dr. Gupta
Administrator:
J. Reichstadt

Clinical Competency Committee (CCC)

1. **Dr. Neel**
2. **Dr. Sladek**
3. **Dr. Motarjemi**
4. **Dr. Templeman**
5. **Dr. Gupta**
6. **J. Reichstadt**

Program Evaluation Committee (PEC)

Fellowship Recruitment and Selection Committee

CORE CLINICAL ROTATIONS

UCSD

Senior Behavioral Health
*Rotation Director:
Dr. Neel

Geriatric Medicine Clinic
*Rotation Director
Dr. Gupta

Trauma Consult
*Rotation Director:
Dr. Templeman

Palliative/Post-Acute/
Electives

Owen Clinic
*Rotation Director:
Dr. Karris

COMMUNITY PARTNERS

Elizabeth Hospice
*Rotation Director:
Dr. Rawi

Silverado
*Rotation Director:
Dr. Rawi

West PACE
*Rotation Director:
Dr. Colt

VA

Home-Based Primary Care
*Rotation Director:
Dr. R. Nguyen

Palliative
*Rotation Director:
Dr. Naco

Clinic
*Rotation Director:
Dr. Bailey

Community Living Center (CLC)
*Rotation Directors:
Dr. Motarjemi and Dr. Sladek

OUR FELLOWS



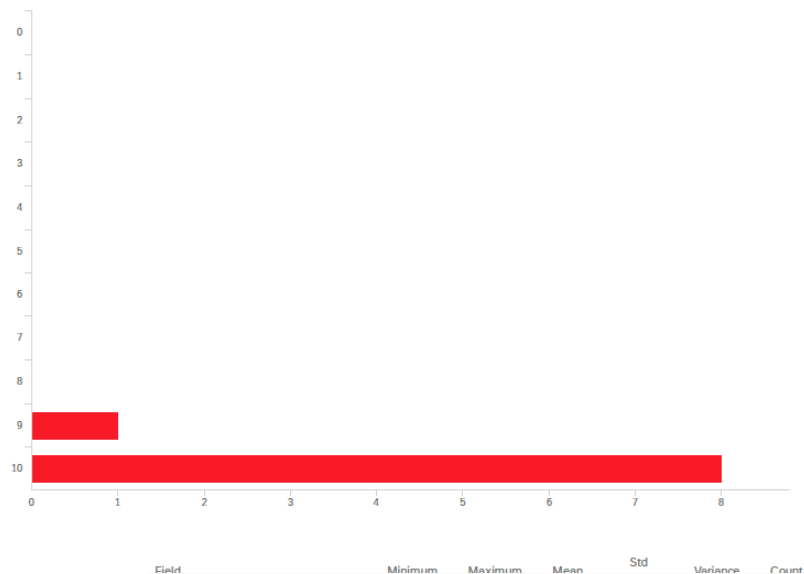
3 per year

UC San Diego
Health Sciences

ALUMNI EVALUATION - 2022

12 - How likely is it that you would recommend UC San Diego Geriatrics Fellowship

Program training to others? [Scale of 0-10 with 0 = "Not at all likely" and 10 = "Extremely likely"].



It's an outstanding program with motivated, thoughtful program leadership and a wide variety of clinical opportunities with a clear focus on education over service, but also plenty of hands-on opportunities.

Geriatric fellowship is an integral part of my career. It highlights the areas where I need to focus in delivering A quality care. In addition to the improving the medical aspect of care, it provides an insight on the social and functional aspects of care which is equally important. Moreover, people with complex medical care seek to establish care with a geriatrician than a regular internist being further trained in that field. The fellowship program also empower the knowledge about palliative and hospice care. It's definitely worth it in my opinion.

I really enjoyed my time in fellowship and it allowed me to pursue education that set me up for success in a variety of geriatrics-associated jobs/careers.

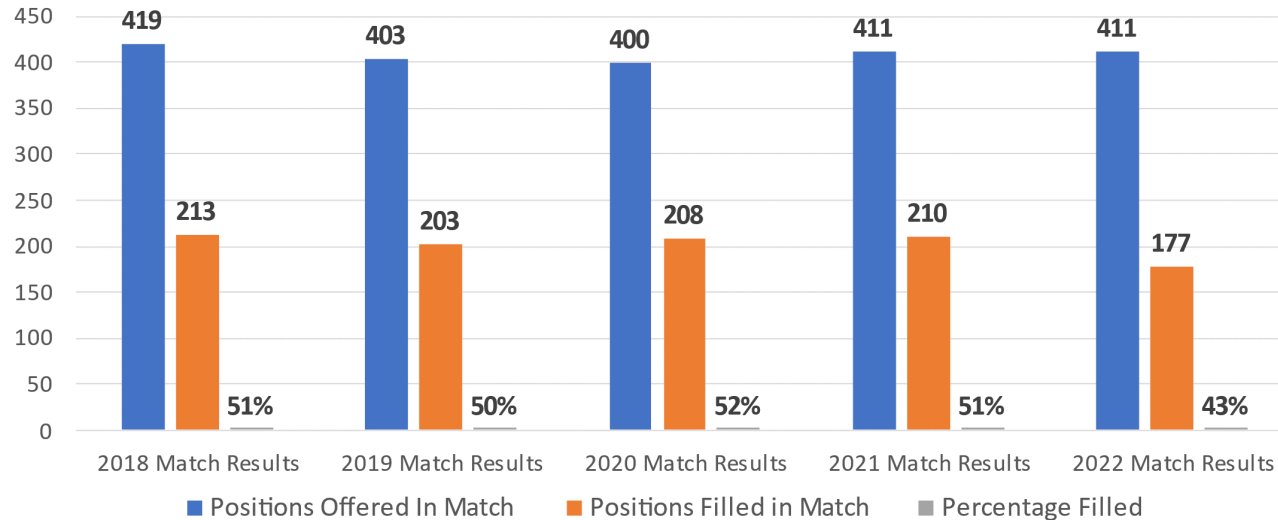
I think a fellow gets the best support from program and is a stress-free program with a lot of opportunities.

Great educational experience.

Location, faculty, spirit of the program

Quality, opportunities, great city

Table 1: 2018-2022 Total Number of Geriatrics Fellowship Positions offered and filled in the Match

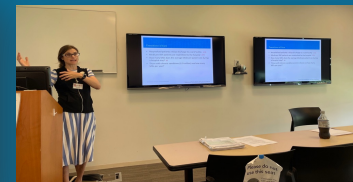
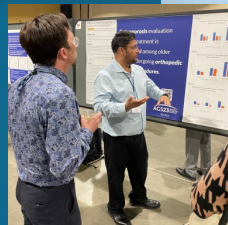
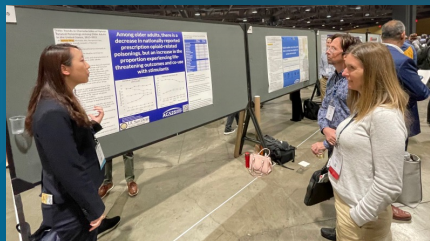


Top Level Data Points

- 152 geriatrics fellowship programs participated in the match and 10 programs did not (NRMP/ADGAP data).
- Of the 152 programs in the match, 89 matched at least one fellow with forty-six programs filling all slots (Match Results Statistics Medicine and Pediatric Specialties – 2022).
- A total of 177 residents chose to match into a Geriatrics or Geriatrics-Palliative Care fellowship, a decrease of 7% (33) when compared to 2021.^[1]
- There were 83 fewer applicants for Geriatrics Fellowship in 2022 as compared to 2021, a decrease of 23%. Notably, there were 60 fewer IMG applicants in this year’s pool (Table 2).
- Total fill rate (Match + Supplemental Offer and Acceptance Program (SOAP)) + Post-Match Recruitment^[2] has been stable since 2015/2016 (Table 3).

GERIATRIC MEDICINE FELLOWSHIP

FELLOWSHIP



KEY ACCOMPLISHMENTS

- Successful Recruitment in the Match
- Ongoing Iterative Development of Didactic Series and Clinical Rotations
 - AGS/ADGAP Leadership and Life Skills Curricula
 - Enhanced Journal Club
 - FACE (Fellow as a Clinician Educator) Course
- Annual Fellow Teaching Award Recipients:
Kyle Edmonds (2019); Taib Rawi (2020); James Templeman (2021), EB Sladek (2022))
- Sustained Funding for Fellowship
 - Ongoing Relationships and Contracts w/Partner Community Training Sites
 - Philanthropic Gift (Hollander Trust)
 - GWEP Support for Fellow Training and Conference Travel
- Dissemination
 - Escape Room Activity on AFHS Developed and Published in JAGS
 - Poster Presentation of Improv Activity

RESIDENT EDUCATION

RESIDENT TRAINING

UCSD Internal Medicine Residents
4-week PGY2 Rotation
Elective Available

Scripps IM Residents

UCSD FM Residents
(Occasional)

Camp Pendleton FM Residents

Family Health Centers of
SD FM Residents

Pharmacy Residents

KEY ACCOMPLISHMENTS

New Elder Abuse Training Curriculum for Residents and Fellows (Gupta, Sladek) – Archstone Foundation funded; Collaboration with Other GWEPs (USC – Lead)

Continued enhancements to Geriatrics Rotation and supplemental resources (e.g., 4Ms Resources)

Geriatrics Elective and Geriatrics Interest Group

Ongoing Efforts to Improve Pipeline

UCSD IM Exam Scores improved on Geriatrics Content on standardized In-Training Exam

	2015	2016	2017	2018
UCSD PGY-2	74%	69%	74%	77%
All programs PGY-2	68%	63%	70%	67%
UCSD PGY-2 Percentile Rank	83%	82%	77%	96%

Table 2. ITE Mean Percent Correct Score in Geriatric Medicine from 2015 through 2018.

Elder Abuse Training Curriculum



Keck School of
Medicine of USC
Department of Family Medicine

UC San Diego
School of Medicine

UC Irvine Health
School of Medicine
Division of Geriatric Medicine and Gerontology

UCSF
Division of
Geriatrics
Department of Medicine

ELDER ABUSE CURRICULUM FOR MEDICAL RESIDENTS AND GERIATRIC FELLOWS

Family, Internal, Emergency, and Psychiatry Medical Residents and Geriatric Fellows



As mandated reporters, physicians require training to screen, recognize, and respond to elder mistreatment in the clinical setting. Developed through the collaboration of elder abuse experts, geriatricians, and primary care physicians from USC, UCI, UCSD, and UCSF, this interactive curriculum is available to integrate into residency and fellowship training programs.

•Please reserve time in your training schedule for this important educational opportunity

The Elder Abuse Curriculum

Please click [HERE](#) or scan the QR code to access the curriculum



Modules 1 - 4:

30-minute, self-directed learning modules:

1. Provider's Role in Detection and Response
2. Screening and Documentation
3. Diverse and Cognitively Compromised Populations
4. Intervention and Response

Modules 5 - 6:

5. Self-directed Summary Review (1 hour)
6. Faculty-facilitated Simulated Case Study and Clinical Skills Development (1 hour or 90 min with optional lessons)

Plan A: Complete Curriculum

Assign Modules 1-4 (asynchronous, 2 hours total) & Module 6 (faculty facilitated, 1 hour or 90 mins)

Plan B: Abbreviated Curriculum

Assign Module 5 (asynchronous, 1 hour) & Module 6 (faculty facilitated, 1 hour or 90 min)

Plan C: Brief Overview Curriculum

Assign Module 5 (asynchronous, 1 hour)



<https://keckschool.aomlms.com/course-catalog>

UC San Diego
Health Sciences

MEDICAL STUDENTS

MEDICAL STUDENTS

MED 452 - 4th year
(4 weeks)

*Director: Dr. Gonzalez
(Interim: Dr. Antalan)

MED 410 - 3rd year
(2 weeks)

*Director: Dr. Neel

MED 279 - 1st & 2nd year
(One afternoon each week/quarter)

*Director: Dr. Templeman

Practice of Medicine (POM)

Geriatrics Student Interest Group
Lead: Dr. Templeman

KEY ACCOMPLISHMENTS

New MED 279 Course (Pre-Selective) and Growing # of Students Completing Electives (16 students total across geriatrics electives in AY 2022-23)

Ruth Covell Award in Geriatrics – 1-2 Graduating Medical Students Each Year
4Ms Curriculum



FACULTY/STAFF TRAINING

FACULTY/STAFF DEVELOPMENT

CME Division Grand Rounds Series

Conference Participation

KEY ACCOMPLISHMENTS

- CME-Accredited Division Grand Rounds Series (established in 2016)
- Development of the Geriatrics Education Portal for centralized access to schedules, didactics recordings, etc.
- Access to Geriatrics Review Syllabus Teaching Slides
- Active Participation in Local/National Conferences
- AGS / ADGAP Board Positions and Special Interest Group Leadership



COMMUNITY EDUCATION



SAN DIEGO / IMPERIAL GERIATRIC EDUCATION CENTER (SDIGEC) GWEP

Funded by the Health Resources and Services Administration

SDIGEC GWEP (2015-2019) was originally established to address the need for enhanced geriatric education on Alzheimer's Disease and Related Dementias (ADRD) in San Diego County

- Education development built upon The Alzheimer's Project, a San Diego county-wide program
- Informed the Age Well San Diego Action Plan (2018) for an Age-Friendly/Dementia-Friendly San Diego



SDIGEC GWEP renewal (2019-2024) expanded focus to comprehensive ADRD, geriatrics and age-friendly health care education for primary care in rural and underserved areas.

- Partnerships developed with Federally Qualified Health Centers (FQHCs) and Programs of All-Inclusive Care for the Elderly (PACE) sites
- Expansion to neighboring Imperial County

Currently 48 GWEPs across the U.S.



PARTNERS

ACADEMIC



School of Nursing School of Social Work

UC San Diego

Division of Geriatrics, Gerontology & Palliative Care

COMMUNITY-BASED ORGANIZATIONS



Southern Caregiver Resource Center
Caring for those who care for others

Alzheimer's | SAN DIEGO



CHAMPIONS for HEALTH
PHYSICIANS IMPROVING HEALTH CHANGING LIVES

COUNTY AREA AGENCIES ON AGING



San Diego County Aging & Independence Services



Imperial County Area Agency on Aging

FQHC & PACE HEALTHCARE PARTNERS



GWEP LEADERSHIP



Roopali Gupta
Project Director



Phil Greiner
Co-Project
Director



**Jennifer
Reichstadt**
Project Manager



Kellie Scott
Co-Project
Manager

UCSD TEAM



Ivonne Arias,
MSW



**Veronica
Gonzalez, MD**



Benjamin Han,
MD, MPH



Laura Hart,
PharmD, MS,
BCPS, BCGP



Steve Huege,
MD, MEd



Ian Neel, MD



Khai Nguyen,
MD, MPH



Anjoulie Pujji,
DO



Emily Sladek,
MD



**James
Templeman, MD**



Colin Thomas,
MD, MPH



Sasha Weiss

**SAN DIEGO COUNTY AGING
& INDEPENDENCE
SERVICES**



**Lindsey
Yourman, MD**



**Carolyn Kendle,
MD**



**Kristin Smith,
MPH**

INNERCARE



**Johnathan
Slone, MD,
MBA, MPH**



Sara Sanders

CHAMPIONS FOR HEALTH



Barbara Mandel

**IMPERIAL COUNTY AREA
AGENCY ON AGING**



Sarah Enz, JD

**GLENNER ALZHEIMER'S
FAMILY CENTERS**



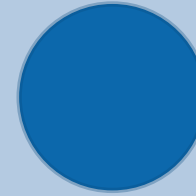
**Mindy Baker,
PhD**

**SAN YSIDRO HEALTH/SAN
DIEGO PACE**



**Vicente Diaz,
MD**

ALZHEIMER'S SAN DIEGO



**Regina Lagasca,
MSW**



Joaquin Ortiz

**FAMILY HEALTH CENTERS
OF SAN DIEGO**



Jeff Gering



Esther Chacon

**SOUTHERN CAREGIVER
RESOURCE CENTER**



**Roberto
Velasquez, MS**

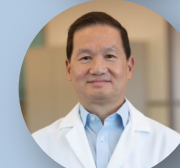


Martha Ranon

ST. PAUL'S SENIOR SERVICES



**Karen Mitchell-
Keels, MSN, RN,
MSL, CMCN**



Victor Lee, MD

SAN DIEGO IMPERIAL GERIATRIC EDUCATION CENTER – OVERVIEW



Objectives

- Developing partnerships between academia, primary care delivery sites, and community-based organizations to train a workforce to provide value-based care that improves health outcomes for older adults;
- Training primary care providers, and health professions students, residents, fellows, and faculty;
- Delivering community-based programs that provide patients, families, caregivers, and direct care workers with the knowledge and skills to improve health outcomes for older adults; and
- Transforming primary care environments into dementia-friendly/age-friendly systems that provide value-based care.

Primary Focus: ADRD

100,000 living with ADRD in SD County

Target Audience

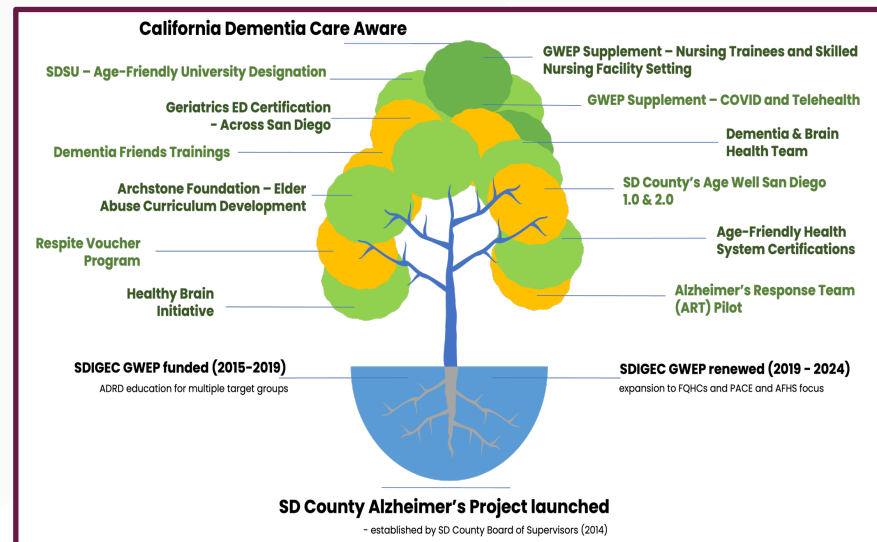
Geriatric Medicine & Geriatric Psychiatry Fellows; Residents; Medical, Nursing & Social Work Students; Primary Care Providers & Other Team Members; Patients; Families; Care Partners; Direct Care Workers; First Responders

Training Mechanisms

Live & Virtual Presentations; Webinars; Recorded Lectures; Simulation; Material Resources (Tailored to Organization and Audience)

Implementation & Practice Support

Work Flow Modifications; Open Hours; Case Discussions; Connection to Community Resources



SAN DIEGO IMPERIAL GERIATRIC EDUCATION CENTER – HIGHLIGHTS

New Materials & Resources



- San Diego Alzheimer's Project Clinical Guidelines Booklet
- On-Demand Webinars



- Remote Dementia Challenge Experience
- Designed to simulate sensory and cognitive changes



Tools for Care Partners:

- Dementia Friendly Activities Toolkit – available in English, Spanish, Arabic, Tagalog, Vietnamese
- Dementia Communication Cards
- Caregiver's Handbook



- 4Ms Trainings
- Geriatrics Escape Room Activity (created by geriatrics fellows to train fellows and residents on the 4Ms): Devlin S, Guan J, Reichstadt J, Sladek E, Gupta R. The University of California San Diego Geriatrics Escape Room: A Didactic Innovation. J Am Geriatric Soc. 2021 Jan; 69(1): E1-E3. doi: 10.1111/jgs.16913. Epub 2020 Nov 3. <https://pubmed.ncbi.nlm.nih.gov/33140847/>
- "Using Improvisation Techniques to Teach Communication Skills for Dementia Care" - An Interactive training for fellows and other trainees



- Other Provider Trainings and Patient Education Offered by Community Partners
- Workshops for professionals serving people living with Dementia
 - Caring for the Caregiver Series (English/Spanish)



Collaborative Projects with Other GWEPs

- Elder Abuse Training Curriculum for Residents & Fellows : <https://keckschool.aomims.com/course-catalog>
- Dementia Care Aware Initiative through the California Department of Health Care Services: <https://www.dementiacareaware.org/>
- Publication on Partnerships with FQHCs During the Pandemic: Gibbs L, Rousseau J, Tumosa N, et al. Pioneering COVID-19 Pandemic Partnerships: Federally Qualified Health Centers and Geriatric Workforce Enhancement Programs Work Together to Care for Diverse Underserved Older Adults. Gerontology and Geriatric Medicine. 2022;8. doi:10.1177/23337214221122523 <https://www.ncbi.nlm.nih.gov/pmc/articles/PMC9452800/>

Workforce Enhancement

- Dementia-Focused Internships – SDSU Nursing & Social Work Students
- Bidirectional Rotations (e.g., FHCS – UCSD)
- Hiring of Fellows at FQHC PACE Sites and Students at Partner Organizations
- Community Partners Educating Health Professions Students and Healthcare Providers
- Gerontology and Dementia Curriculum – Medical Assistant & CNA Students – Imperial Valley

Age-Friendly Health System Recognition

- Level 2: UC San Diego & Family Health Centers of San Diego
- Level 1: San Ysidro Health / SD PACE & St. Paul's PACE
- All Healthcare Partners Currently Enrolled in GWEP-CC AFHS Action Community

Collaborations with Other GWEPs

- UC Irvine
- University of Southern California
- UC San Francisco
- University of Louisville Trager Institute

Education and Training



Dementia Care Aware offers many ways for providers and primary care teams to receive training on the cognitive health assessment and other relevant dementia care topics. Check out some of the training opportunities below. All offerings provide free CEs!

Cognitive Health Assessment Training

The primary training is course on a dementia screening approach called the cognitive health assessment. This training can be completed in our self paced e-Learning course or in a 1 hour webinar held twice a month. The online course offers 1.5 CE credits and the webinar format offers 1 CE credit

Additional Monthly Webinars

1 CE credit given with live attendance, these 60-minute webinars present information on a variety of topics to assist with dementia care from screening to care planning and implementing dementia care processes into your workflow.

Podcasts

Dementia Care On-Air is a 30-minute (1.5 credit) podcast that can be streamed on podcast platforms and is intended to supplement the webinars and CHA training with a more casual conversational delivery.



TRAINING ON THE CHA

Dementia Care Aware provides a self-paced care training that can be done over time and offers CE/CME/MOC.

Providers who take the training are eligible to bill for this assessment for patients 65 and older with Medi-Cal only using code 1494F.

The Dementia Care Aware CHA may be used as a resource for the Medicare Annual Wellness Visit.

More trainings are available, including through podcasts, monthly webinars, videos, and written tools.

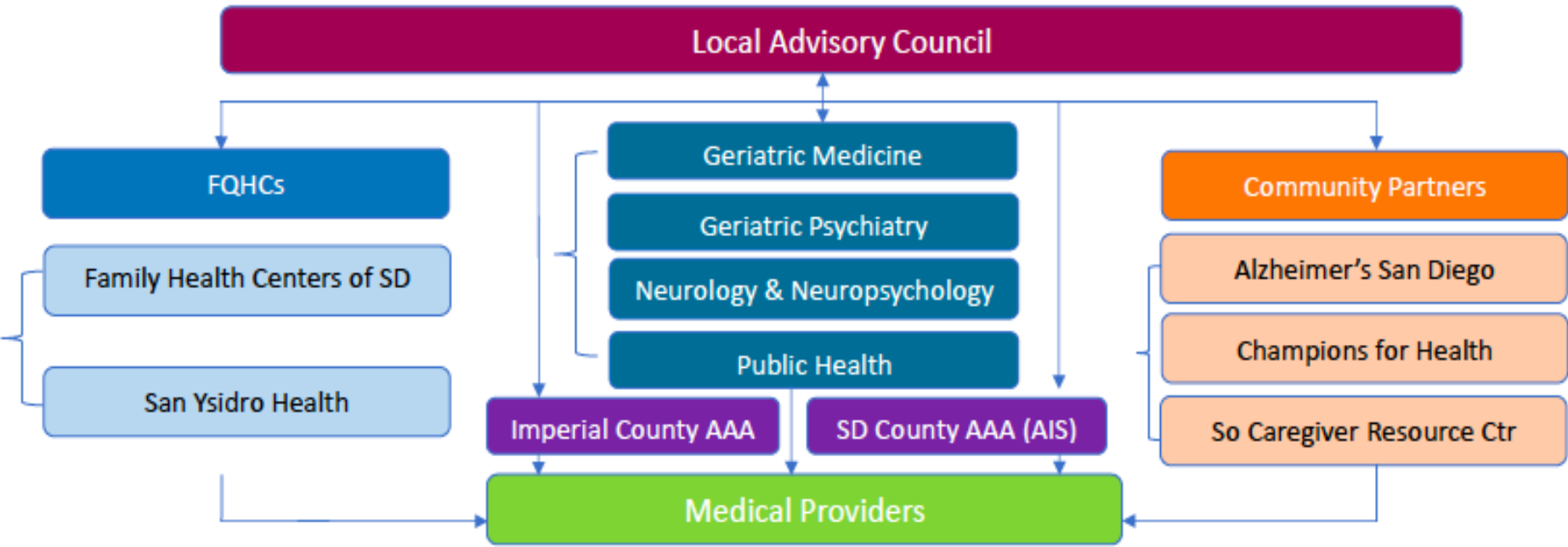
Dementia Care Aware will provide additional modules on key topics, such as the CHA in non-English speaking populations.

PRACTICE SUPPORT

We help providers and practices implement the CHA in practice with resources that fit their bandwidth.

- Centralized warmline support (1-800-933-1789) for clinical management or consult questions Monday-Friday from 9 a.m. to 5 p.m. PT.
- Virtual live education and case conferences on the CHA and dementia care.
- Practice support coaching to implement dementia care in one's practice, and hands-on, customized practice improvement guidance available.

LOCAL ORGANIZATION CHART: SAN DIEGO/IMPERIAL COUNTY PARTNERS AND TEAM MEMBERS





Roopali Gupta, MD

Project Director

Geriatrician - Primary Care / Education Chief / GWEP Project Director / Fellowship Director
Associate Clinical Professor
Division of Geriatrics, Gerontology and Palliative Care



Jennifer Reichstadt, MSG

Project Manager

Director of Education and Development / GWEP Project Manager
Division of Geriatrics, Gerontology and Palliative Care



Ian Neel, MD

Geriatrician - Senior Behavioral Health, Memory Clinic / SD Alzheimer's Project Initiative
Associate Clinical Professor
Division of Geriatrics, Gerontology and Palliative Care



Steve Huege, MD, MSeD

Geriatric Psychiatrist - Memory Clinic, Senior Behavioral Health,
Primary Care / Fellowship Director
Associate Clinical Professor, Division of Geriatric Psychiatry



Tala Al-Rousan MD, MPH

Assistant Professor
Herbert Wertheim School of Public Health and Human Longevity
(Focus: Refugee populations; research on dementia awareness, assessment and access to resources)



Elizabeth Bevins, MD, Ph.D.

Neurologist - Memory Clinic / Assistant Professor,
Department of Neurosciences



Zvinka Zlatar, Ph.D.

Neuropsychologist - Memory Clinic, Alzheimer's Disease Research Center
Assistant Professor, Department of Psychiatry
(Focus: Spanish-speaking patients; research on cognition in Latinx community; Promotores)



Vanessa Serrano, RN

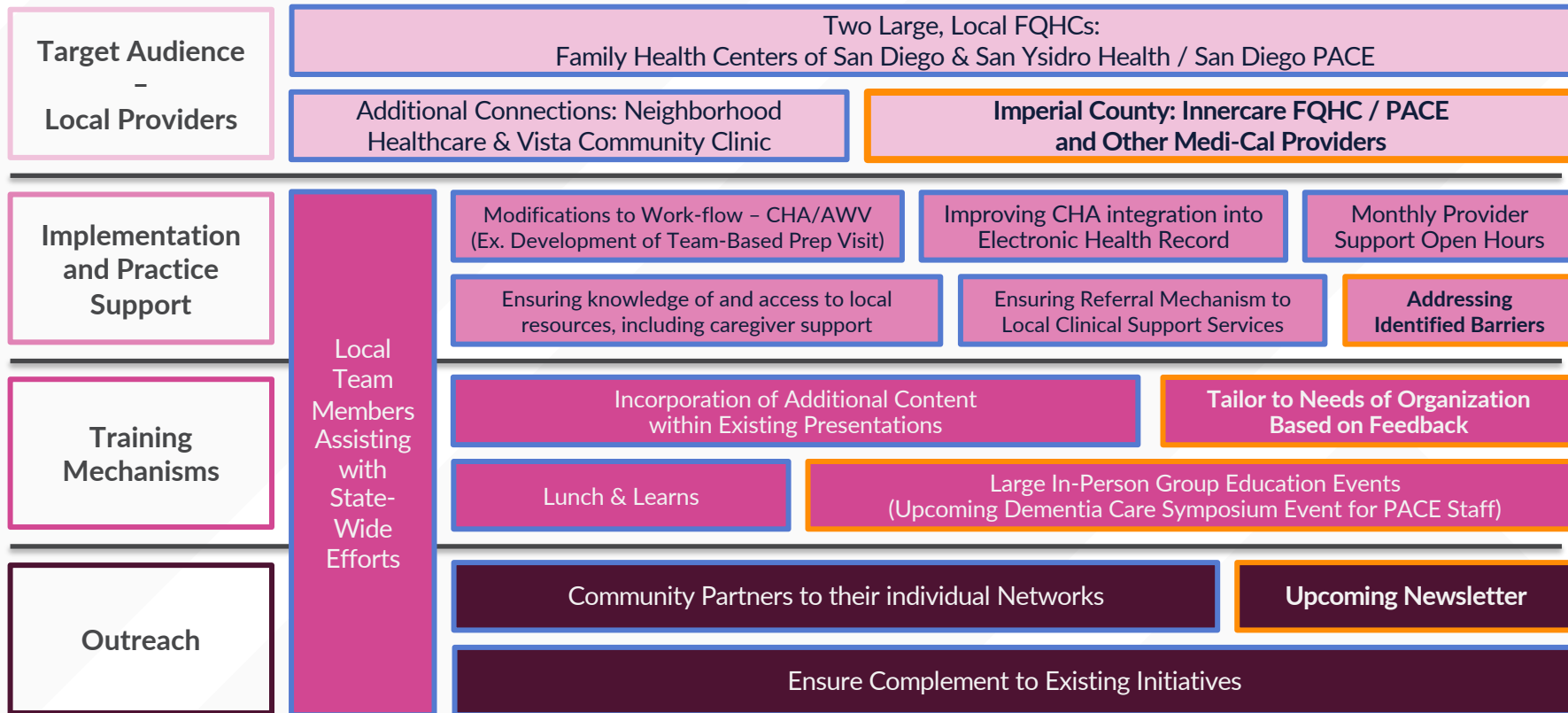
Clinical Resource Nurse - Senior Medicine Clinic



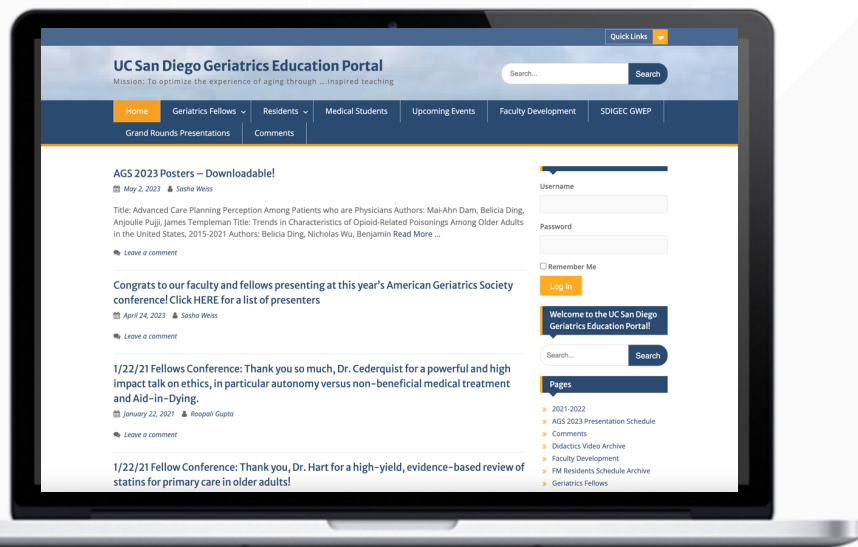
Sasha Weiss

Communications, Division of Geriatrics, Gerontology and Palliative Care

TRAINING AND IMPLEMENTATION EFFORTS

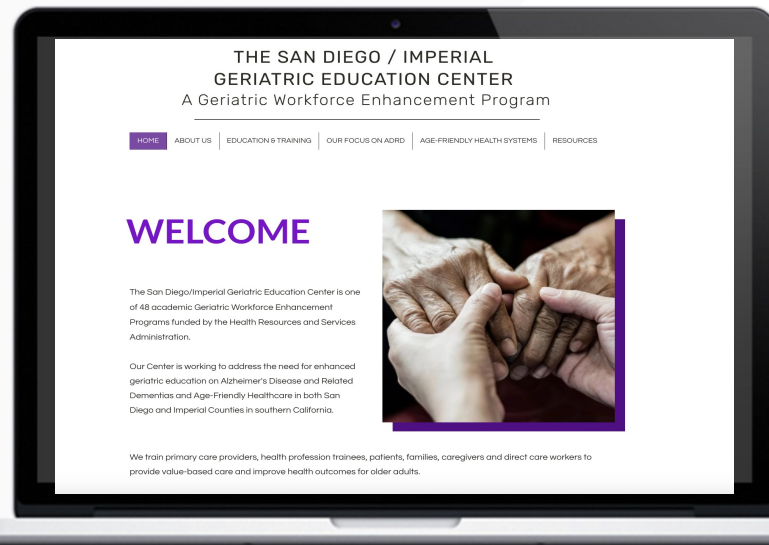


VISIT OUR SITES



SAN DIEGO IMPERIAL GERIATRICS
EDUCATION CENTER

www.sandiegoimperialgwep.com



UCSD Geriatrics Education Portal

UCSD GERI EDUCATION PORTAL

<https://knit.ucsd.edu/gerieducation>

FUTURE DIRECTIONS

FELLOWS/RESIDENTS/STUDENTS

- Leadership Structure Modifications for Fellowship
- Expand Administrative Support
- Continue Efforts to Improve Alumni Connections and Pipeline
- Continued Evaluation and Improvement of Clinical Rotations and Curricular Content

FACULTY/STAFF DEVELOPMENT

- Sustain and Enhance Division Grand Rounds Series
- Ongoing Needs Assessment for Development Opportunities

COMMUNITY EDUCATION

- Focus on GWEP Evaluation for Year 5/Prepare for GWEP Renewal Application

GENERAL

- Continue to Identify and Apply for Funding for Educational Initiatives
- Continue with Geriatrics Education Scholarly Work

and
**THANK
YOU!**



UC San Diego

Health Sciences